

Network Fault & Availability Monitoring Success Story

Published on 22 February 2022



TTG's GEMS®-FAMAN Platform Provides Reliable Network Fault, Performance and Availability Monitoring for Türk Telekom's VPN, WIFI, Data Center Networks and Intranet

Türk Telekom actively monitors and manages thousands of devices/ports in different domains and advises clients on performance, fault, alarm and security about management of their network infrastructure. It's important to identify and mitigate operational risks within the clients' networks to keep them running optimally and securely. Common risks that the operator team actively manages are outages caused by device failures.

The GEMS®-FAMAN has been preferred as the solution because of the low total cost of ownership (TCO), manageability, easy to use and low-cost expandability of the network monitoring done in a single tool. The GEMS®-FAMAN is a new network monitoring solution that is built to do one thing only - provide you with an easily manageable, reliable, and cost-effective network monitoring solution that will remain relevant for years to come.

GEMS®-FAMAN Platform with FCAPS Functionality

Türk Telekom implemented the GEMS®-FAMAN Platform to provide a comprehensive network monitoring environment for their clients. "As the digital transformation leader of our country, Türk Telekom promotes collaboration with domestic technology companies to develop national products and carry out business development activities. As Türk Telekom, we will continue to create value by contributing to the development of domestic and national technologies through the investments we have made with the localization of our critical products." Mr. Yusuf Kır a, Türk Telekom's Chief Technology Officer explains.



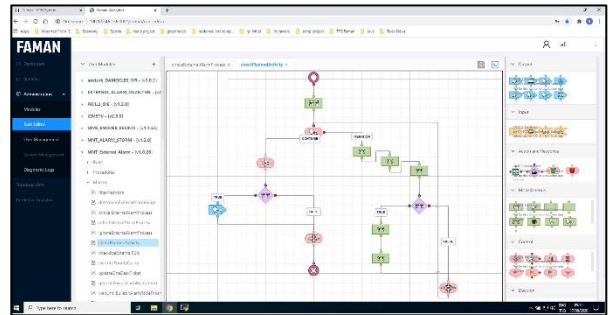
Yusuf Kır a, CTO, Türk Telekom

Network Fault & Availability Monitoring Success Story

Published on 22 February 2022

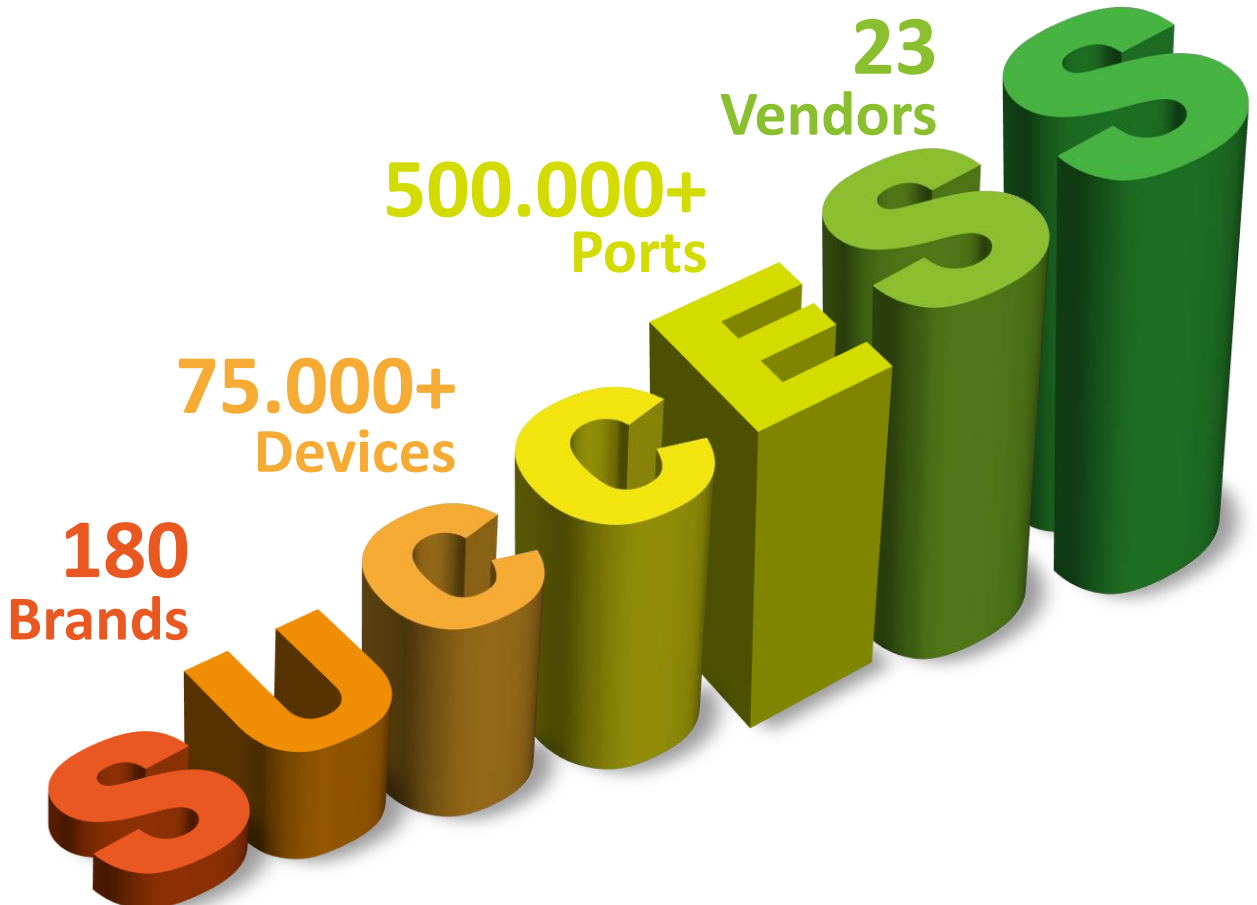
TTG's Generic Element Management System (GEMS®) makes it easy to quickly detect, diagnose, automates the discovery and resolvent of performance issues in real-time and lowers your risk of losing business. Your customers rely on your service to function properly. This is no small matter. With GEMS®-FAMAN, you can be confident that you're running a stable, reliable, and secure service.

The platform also enables business and network users to graphically define, test, implement and change business rules quickly by presenting a Visual Business Rule Editor which is the low-code solution for rules-based automation without coding.



Key Achievements of GEMS®-FAMAN Platform

OpEx/CapEx
Savings



Network Fault & Availability Monitoring Success Story

Published on 22 February 2022

Automated Network Discovery

You can schedule regular scans from a Web-based discovery wizard that will find new network devices and alert you when a new device/s joins your network. Hence, ensuring you are monitoring all your network equipment.

Availability and Performance Monitoring

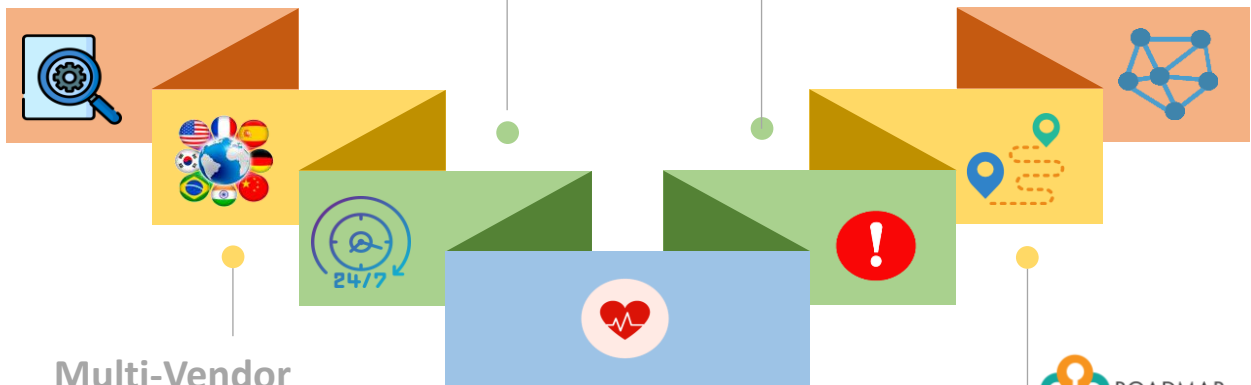
Monitors network device and interface availability and key performance indicators (KPI), such as utilization, bandwidth, packet loss, latency, errors, discards, CPU, and memory for all your SNMP and WMI-enabled devices.

Intelligent Network Alerting

Quickly configure alerts for correlated events, sustained conditions, and complex combinations of device states. Topology and dependency-based alert suppression enables you to intelligently escalate alerts for issues that are truly critical.

Network Topology Mapping

Network topology mapping, or network mapping, is the automatically process of creating maps that visualize your network layout by creating a network map between devices and their real-time status.



Multi-Vendor Device Support

GEMS monitors availability and performance statistics for any router, switch, firewall, VPN concentrator, wireless access point, and other devices. GEMS will notify you when anything goes wrong with your network before it causes problems for your customers. The essential service helps you identify what's really going on in your business-critical networks so you can resolve issues before they become an expensive problem.

Hardware Health Monitoring

Get at-a-glance insight into the health of your network hardware by monitoring, alerting, and reporting on the state of key device sensors including temperature, fan speed, and power supply.

Network Route Monitoring

You'll never have to worry about the state of your network or any of its devices ever again. You can see all active routes briefly in Realtime - including routing tables, changes in default routes, BGP transitions, and flapping routes. GEMS support for major routing protocols (RIP v2, OSPF v2, BGP).